

Comparison of Martín-Baró Scholars to Overall Freshman Class Fall 2002 Cohort

**Office of Institutional Research
October 22, 2004**

Summary

At the request of Associate Provost Gerardo Marín, the Office of Institutional Research at USF conducted selective quantitative research on the fall 2002 cohort of thirty-three Martín-Baró Scholars. The Martín-Baró Scholars were part of a program sponsored by the James Irvine Foundation, under Dr. Marín's direction. At USF, the overall program was named *Educating for a Just Society*, and the Martín-Baró Scholars component consisted of a learning community of socially involved scholars in the spirit of Ignacio Martín-Baró, one of the Jesuit martyrs killed in El Salvador in 1989. The students in the program engaged in a comprehensive living-learning community during their freshman year; took an integrated course that was specially designed to explore issues of social justice and diversity and that involved students in reflective service learning; and received academic and social support and advising from peer and faculty mentors, to name just some of the features of the program. The living-learning community continued into the students' sophomore year, and other program components were added as well.

Methodology

A statistical analysis was conducted of various academic measures for the thirty-three Martín-Baró Scholars in comparison to the entire USF freshman cohort of 2002 of 840 students. The measures included the mean SAT scores and grade point averages from high school, cumulative grade point averages at USF, units completed, number of students who made the dean's list, and retention rates.

Results

By the end of their second academic year, the Martín-Baró Scholars who entered USF in the fall of 2002 had:

1. A mean GPA that was .05 higher than the entire freshman cohort
2. Completed on average 1.5 more semester credit hours than the student average for the entire freshman cohort
3. Seven scholars who made the dean's list both semesters during their first year, and six scholars who made the dean's list both semesters during the second year
4. A first-year retention rate of 96.9%, compared to an 85.5% first-year retention rate for all students in the fall 2002 cohort. The second-year retention rate for the fall 2002 Martín-Baró Scholars was 90.9%, compared to a 74.0% retention rate for the overall freshman cohort at the end of the second year

Conclusions and Implications

The Martín-Baró Scholars who entered USF as freshmen in the fall of 2002 outperformed the overall freshman cohort by every measure employed. The results of our statistical analysis strongly indicate the success of the Martín-Baró Scholars Program in achieving its academic goals and suggest the role of such communities in helping future students achieve their academic goals. We believe the current research supports the expansion of living learning communities to greater numbers of entering freshmen. This analysis does not speak to the many important social justice activities by the cooperative learning community of Martín-Baró Scholars during their first years at USF. Those activities, documented elsewhere, when integrated with the academic achievement documented in this study, indicate that the Martín-Baró Scholars Program is helping attain many of the goals called for in the *Vision, Mission, and Values Statement* of the University of San Francisco, including the following strategic initiative: to “enroll, support and graduate a diverse student body which demonstrates high academic achievement, strong leadership capability, concern for others and a sense of responsibility for the weak and the vulnerable.”

Index of Tables by Table Numbers

<i>Title of Table</i>	<i>Table Number</i> <i>Cohort 02</i>	
Comparison of SAT Mean Scores of Martín-Báro Scholars and Freshman Cohort	1	
Comparison of High School, First Semester, Second Semester, and Cumulative GPA of Martín-Báro Scholars and Freshman Cohort	2	
Comparison of High School GPA Distribution of Martín-Báro Scholars and Freshman Cohort	3	
Comparison of Units Completed by Martín-Báro Scholars and Freshman Cohort	4	
Martín-Báro Scholars' Distribution of Majors	5	
Entry Characteristics of Martín-Báro Scholars by Gender	6	
Mean GPA of Martín-Báro Scholars by Gender, by Semester	7	
Mean Units Completed of Martín-Báro Scholars by Gender, by Semester	8	
Entry Characteristics of Martín-Báro Scholars by Ethnicity	9	
Mean GPA of Martín-Báro Scholars by Ethnicity, by Semester	10	
Mean Units Completed by Martín-Báro Scholars by Ethnicity, by Semester	11	
Martín-Báro Scholars on the Dean's List	12	

<i>Title of Table</i>		
-----------------------	--	--

	<i>Cohort 02</i>	
Correlation of High School GPA and SAT of Martín-Báro Scholars and USF Cumulative GPA after Year 1	13	
Correlation of High School GPA and SAT of Martín-Báro Scholars and USF Cumulative GPA after Year 2	14	
Retention Rate of Martín-Báro Scholars and Freshman Cohort	15	

Index of Graphs by Graph Numbers

Title of Graph	Graph Number Cohort 02		
Distribution of SAT Scores for Martín-Báro Scholars	1		
Distribution of High School GPA Scores for Martín-Báro Scholars	2		
Comparison of Cumulative GPA and Combined SAT Scores for Martín-Báro Scholars, Fall 02 Cohort	3		
Comparison of High School GPA and Cumulative USF GPA for Martín-Báro Scholars, Fall 02 Cohort	4		

Table 1. Comparison of SAT Mean

Table 1. Comparison of SAT Mean Scores of Martín-Báro Scholars and Freshman Cohort, Fall 2002

	Mean Scores		25 th Percentile		75 th Percentile	
	Martín-Báro	All Freshmen	Martín-Báro	All Freshmen	Martín-Báro	All Freshmen
Verbal SAT	538	535	470	480	600	590
Math SAT	538	544	480	490	585	600
Total SAT	1077	1079	945	980	1175	1170

Graph 1. Distribution of SAT Scores for Martín-Báro Scholars

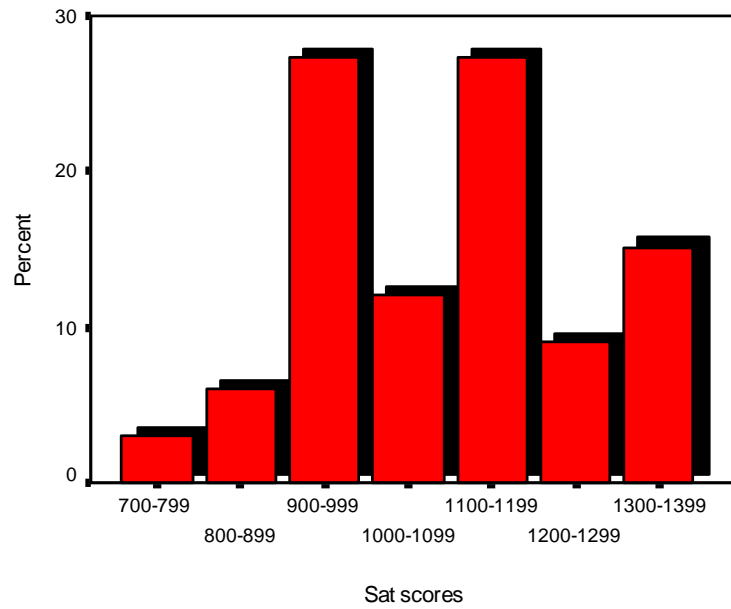


Table 2. Comparison of High School, First Semester, Second Semester, and Cumulative GPA of Martín-Báro Scholars and Freshman Cohort, Fall 2002

	Martín-Báro Scholars	Freshman Cohort	Difference
High School GPA	3.33	3.30	.03
1 st Semester GPA	3.11	3.05	.06
2 nd Semester GPA	3.19	3.04	.15
Cumulative GPA year 1	3.14	3.04	.10
Difference 1 st & 2 nd Semester year 1	.08	.01	.07
3 rd Semester GPA	3.17	3.08	.09
4 th Semester GPA	3.22	3.15	.07
Cumulative GPA year 2	3.18	3.13	.05
Difference between 3 rd & 4 th semester	.05	.07	.02
Difference between Year 1 and 2	.07	.11	.04

Table 3. Comparison of High School GPA Distribution of Martín-Báro Scholars and Freshman Cohort, Fall 2002

	2.0-2.2		2.3-2.6		2.7-2.9		3.0-3.2		3.3-3.6		3.7-4.0	
	N	%	N	%	N	%	N	%	N	%	N	%
Martín-Báro Scholars	0	0	2	6.1	3	9.1	12	36.4	7	21.2	9	27.3
Freshman Cohort	1	0.1	51	6.2	133	16.1	251	30.3	216	26.1	176	21.3

Graph 2. Distribution of High School GPA Scores for Martín-Báro Scholars

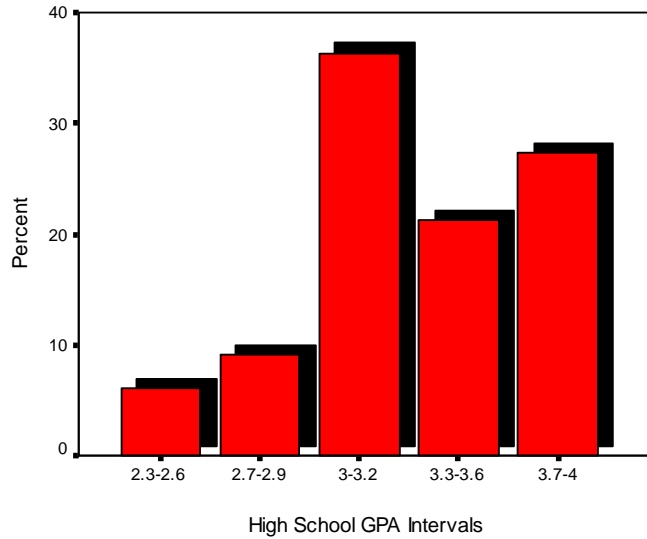


Table 4. Comparison of Units Completed by Martín-Báro Scholars and Freshman Cohort, Fall 2002

	Martín-Báro Scholars	All Freshman	Difference
1 st Semester units completed	16.0	14.9	1.1
2 nd Semester units completed	15.9	15.1	0.8
Cumulative Units completed 1 st year	32.2	29.3	2.9
Difference 1 st & 2 nd Semester year 1	-.06	.02	.4
3 rd Semester units completed	15.7	15.4	.3
4 th Semester units completed	15.3	15.3	0
Cumulative Units completed 2 nd year	31.0	29.5	1.5
Difference between 3 rd & 4 th semester	.4	.1	

Table 5. Martín-Báro Scholars' Distribution of Majors

COLLEGE	N	%
Arts and Sciences		
Psychology	6	18.2
Exercise and Sports Science	4	12.1
Politics	2	6.1
Undeclared Arts	2	6.1
Communications	1	3.0
English	1	3.0
Economics	1	3.0
Media Studies	1	3.0
Philosophy	1	3.0
Spanish	1	3.0
Sociology	1	3.0
<i>Total Arts</i>	<i>21</i>	<i>63.5</i>
Biology	2	6.1
Undeclared Science	1	3.0
<i>Total Science</i>	<i>3</i>	<i>9.1</i>
<i>Total Arts and Sciences</i>	<i>24</i>	<i>72.6</i>
Business	6	18.2
Nursing	3	9.1
Total	33	100

Table 6. Entry Characteristics of Martín-Báro Scholars by Gender, Fall 02

	N	Mean VSAT	Mean MSAT	Total SAT	HS GPA
Male	15	533	532	1065	3.25
Female*	18	543	544	1086	3.40
Difference	3	10	12	21	.15

*Two females were excluded from the analysis, one took a leave of absence for the F03-S04 Term and the other dropped out.

Table 7. Mean GPA of Martín-Báro Scholars by Gender, by Semester, Fall 02-Spring 04

	Mean GPA USF F02	Mean GPA USF S03	Mean GPA USF 1 year	Mean GPA USF F03	Mean GPA USF S04	Mean GPA USF 2 year
Male	2.88	2.97	2.91	3.00	3.02	2.97
Female	3.30	3.38	3.33	3.37	3.41	3.40
Difference	.42	.41	.42	.32	.39	.4

Table 8. Mean Units Completed of Martín-Báro Scholars by Gender, by Semester, Fall 02-Spring 04

	Units USF F02	Units USF S03	Units USF 1 year	Units USF F03	Units USF S04	Units USF 2 year
Male	16.0	15.8	32.1	14.9	14.3	61.3
Female	16.0	16.1	32.3	16.4	16.2	65.4
Difference	0	.3	.2	1.1	2.4	4.1

Table 9. Entry Characteristics of Martín-Báro Scholars by Ethnicity, Fall 02

	N	Mean V SAT	Mean M SAT	Total SAT	HS GPA
Asian	5	534	548	1082	3.46
Black/Non-Hispanic	4	495	512	1007	3.05
Hispanic/Latino	9	484	496	981	3.21
Native Hawaiian/PI	3	497	553	1050	3.36
Multi-Ethnic	1	770	560	1330	2.79
White/Non-Hispanic	8	610	540	1170	3.42
Other*	3	540	603	1143	3.72

* includes unspecified Martín-Báro Scholars

Table 10. Mean GPA of Martín-Báro Scholars by Ethnicity, by Semester, Fall 02-Spring 04

	Mean GPA USF 1 st semester	Mean GPA USF 2 nd semester	Mean GPA USF 1 st year	Mean GPA USF 1 st semester	Mean GPA USF 2 nd semester	Mean GPA USF 1 st year
Asian	3.03	2.73	2.87	2.67	2.90	2.83
Black/Non-Hispanic	3.17	3.16	3.19	2.81	2.90	3.05
Hispanic/Latino*	2.95	3.09	3.01	3.33	3.29	3.21
Native Hawaiian/PI	2.88	3.10	2.99	3.35	3.00	3.09
Multi-Ethnic	2.66	2.58	2.61	3.27	3.00	2.75
White/Non-Hispanic*	3.53	3.61	3.58	3.66	3.78	3.67
Other**	2.87	3.45	3.11	2.88	3.03	3.06

*One Hispanic and one White/Non-Hispanic were excluded from the analysis because they did not attend both the F03-S04 terms

**includes unspecified Martín-Báro Scholars

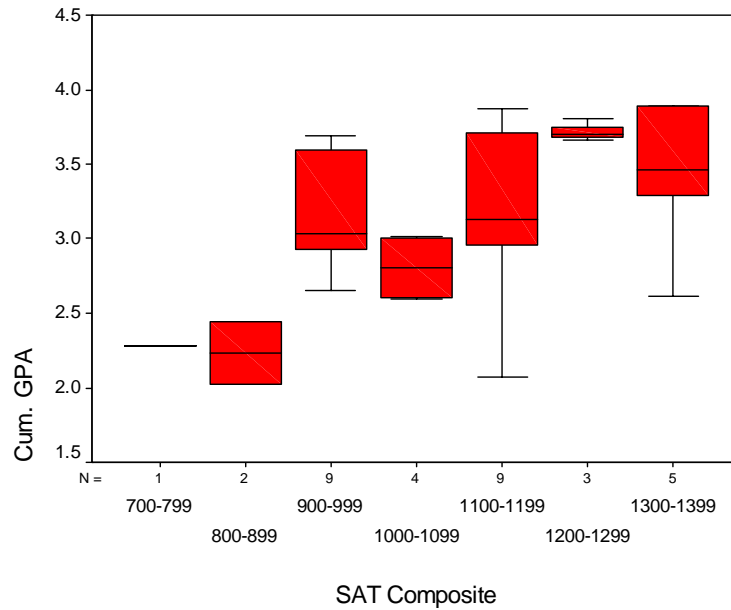
Table 11. Mean Units Completed by Martín-Báro Scholars by Ethnicity, by Semester, Fall 02-Spring 04

	Mean Units USF 1 st semester	Mean Units USF 2 nd semester	Mean Units USF 1 st year	Mean Units USF 3 rd semester	Mean Units USF 4 th semester	Mean Units USF 2 nd year
Asian	15.8	15.6	31.4	15.4	14.2	61.0
Black/Non-Hispanic	15.3	17.0	32.8	14.3	14.5	61.5
Hispanic/Latino	15.9	15.6	31.8	16.6	15.3	64.6
Native Hawaiian/PI	16.7	16.0	32.7	16.3	15.7	64.7
Multi-Ethnic	16.0	16.0	32.0	17.0	16.0	65.0
White/Non-Hispanic	16.1	16.3	32.6	16.4	16.6	65.9
Other*	16.7	15.3	32.0	13.0	14.7	60.0

Table 12. Martín-Báro Scholars on the Dean’s List

1 st Semester	2 nd Semester	Both 1 st Year	3 rd Semester	4 th Semester	Both 2 nd Year
8	9	7	8	9	6

Graph 3. Comparison of Cumulative GPA and Combined SAT Scores for Martín-Báro Scholars, Fall 02 Cohort



Graph 4. Comparison of High School GPA and Cumulative USF GPA for Martín-Báro Scholars, Fall 02 Cohort

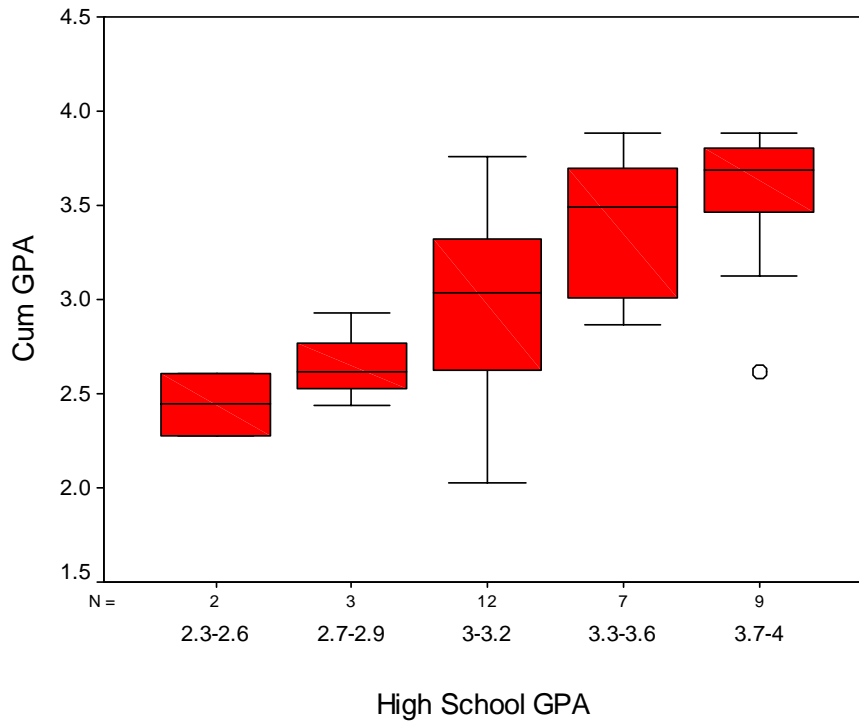


Table 13. Correlation of High School GPA and SAT of Martín-Báro Scholars and USF Cumulative GPA after Year 1, Fall 02 Cohort

		Pearson r	Significance
High School GPA	USF Cum. GPA	.58	.01
Total SAT	USF Cum. GPA	.38	.05
Verbal SAT	USF Cum. GPA	.39	.05
Math SAT	USF Cum. GPA	.44	.05

Table 14. Correlation of High School GPA and SAT of Martín-Báro Scholars and USF Cumulative GPA after Year 2, Fall 02 Cohort

		Pearson r	Significance
High School GPA	USF Cum. GPA	.49	.01
Total SAT	USF Cum. GPA	.41	.05
Verbal SAT	USF Cum. GPA	.38	.05
Math SAT	USF Cum. GPA	.34	<.05

Table 15. Retention Rate of Martín-Báro Scholars and Freshman Cohort Entering Fall 2002

Retention Rate	Martín-Báro Scholars	All Freshmen
After 1 year	96.9%	85.5%
After 2 years	90.9%	74.0%