

More space!  
More fun!

**PRE-LEASE NOW  
AT PARKMERCED**

## **PRICING\***

1-BR: from \$1,500 per person

2-BR: from \$1,000 per person

3-BR: from \$975 per person

*\*Non-furnished. 12-month lease.  
Price is for 2 people per bedroom.*

Due to the overwhelming demand for student housing, we are making a limited number of Parkmerced apartments and townhomes available for pre-lease now in advance for the 2017 Summer/Fall semester. How does pre-lease work? It's simple.

- 1. CHOOSE AN APARTMENT OR TOWNHOME**
- 2. SIGN A LEASE WITH SECURITY DEPOSIT**
- 3. MOVE IN LATER!**

**WE SOLD OUT LAST SEMESTER,  
SO YOU'LL NEED TO ACT FAST!**



**SHORT-TERM  
LEASES**



**PET-FRIENDLY  
COMMUNITY**



**ULTRA-CONVENIENT  
LOCATION**



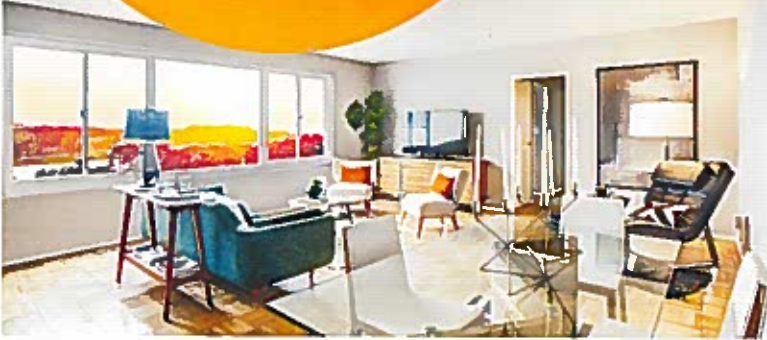
**FURNISHED  
APARTMENTS**



**ONLINE RESIDENT  
PORTAL**

## CONVENIENT ONLINE PORTAL

You or your parent/guarantor can pay rent online, set up automatic monthly payments and submit maintenance requests, all with just a few clicks of your mouse!



Located right across the street from campus, you can't get any closer to SFSU than Parkmerced.

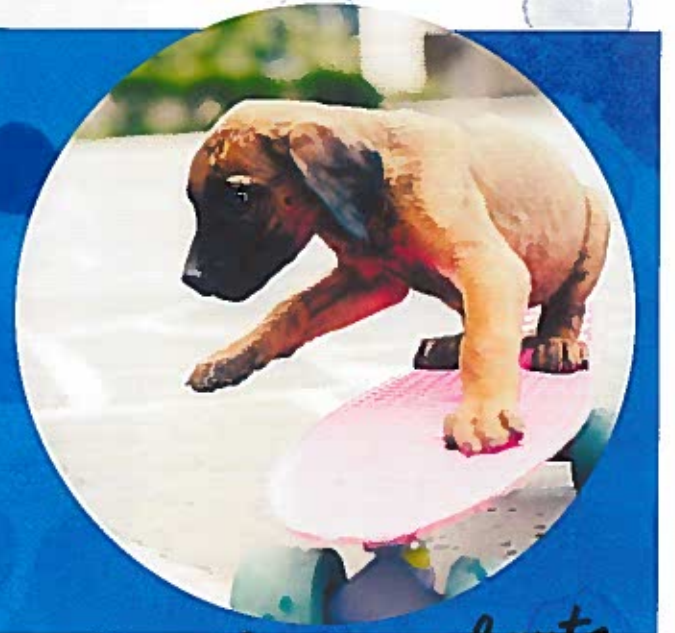
## SCHEDULE A TOUR TODAY!

3711 19<sup>th</sup> Ave. San Francisco, CA 94132

Monday-Saturday: 9am-6pm | Sunday: 10am-5pm  
p: 415.969.3700 e: StudentLiving@parkmerced.com

## COMMUNITY FEATURES

- 24-hour community patrol
- Over 150 acres of green space
- Laundry facilities with email alert systems
- 12 fitness centers with state-of-the-art cardio machines and personal TVs
- Bike rooms and bike racks
- Zipcar locations throughout the property
- BBQs & community outdoor kitchens
- Bocce ball & sand volleyball courts
- 12 business centers with iMacs
- Multiple parking options
- Pet-friendly with fenced-in dog parks
- \$100 Car-Free Living allowance per unit, per month
- Clubhouse with large screen television



 [PARKMERCED.COM/STUDENTLIVING](https://parkmerced.com/studentliving)

*We welcome parents  
& guarantors!*