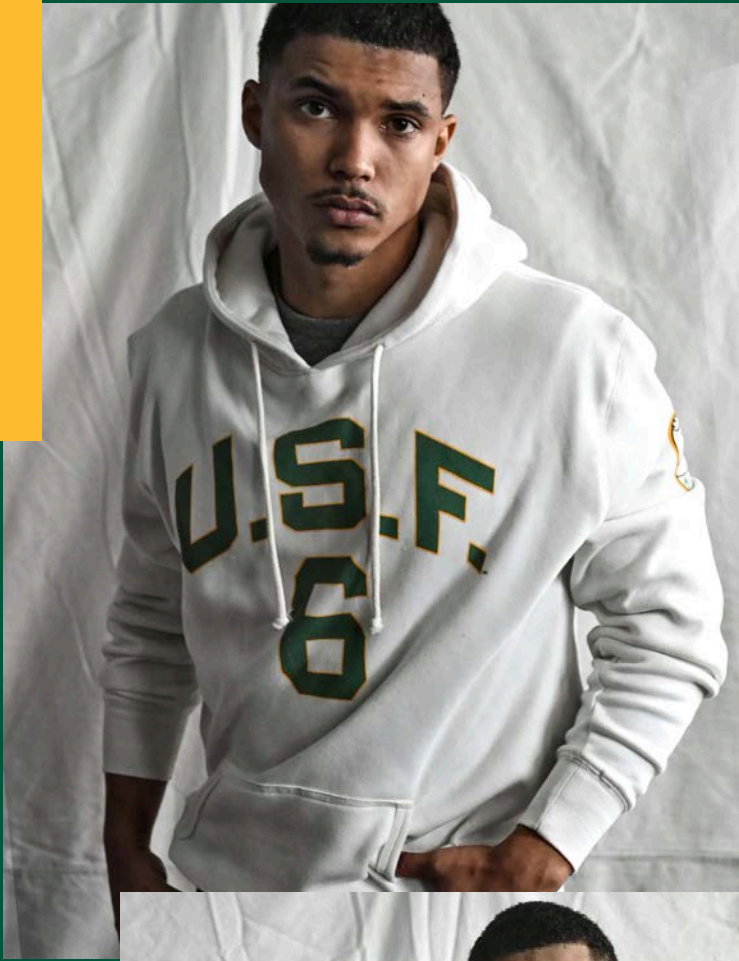


# USF ATHLETICS MERCH



Prices shown in this catalog are exclusive to Hilltop Shop's USF Athletics Merch Shop and reflect a 20% discount on MSRP. Applicable tax not included. All HTS Marketplace sales are final.

# USF ATHLETICS MERCH

## CARDIGAN



### USF Bill Russell '55 Black Cardigan



Fabric is 100% Cotton. Garment printed with Premium Brittle Base Ink – it cracks and ages with each wash for an authentically vintage look and feel. Printed in the USA. Available in sizes S-3XL while supplies last.

## HOODIES AND SWEATSHIRTS



### USF Bill Russell 6 White Hoody



Officially licensed by Bill Russell and the University of San Francisco. Fabric is Tri-Blend Fleece. Printed in the USA. Available in sizes XS-4XL while supplies last.

Prices shown in this catalog are exclusive to Hilltop Shop's USF Athletics Merch Shop and reflect a 20% discount on MSRP. Applicable tax not included. All HTS Marketplace sales are final.

# USF ATHLETICS MERCH

\$71.20



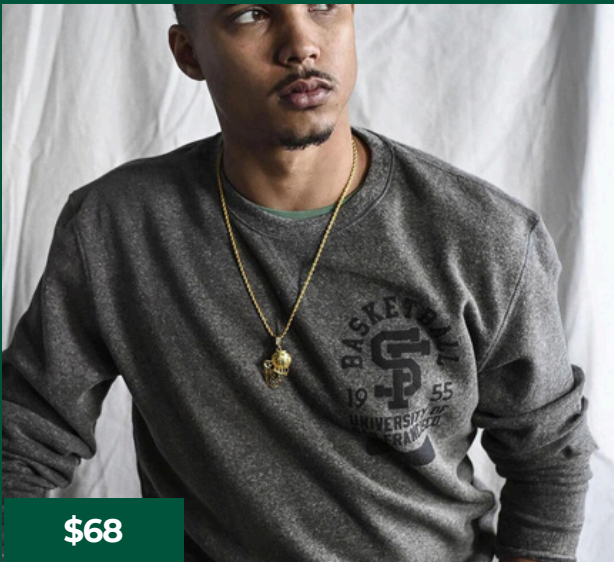
\$71.20



## USF Dons Green Hoody



Fabric is Tri-Blend Fleece. Garment printed with Premium Brittle Base Ink – it cracks and ages with each wash for an authentically vintage look and feel. Printed in the USA. Available in sizes XS-4XL while supplies last



\$68



\$68

## USF Basketball '55 Sweatshirt, Heather Grey



This garment was printed with Premium Brittle Base Ink. It cracks and ages with each wash for an authentically vintage look and fee. Fabric is Tri-Blend Fleece. Printed in the USA. Available in sizes S-4XL while Supplies last

Prices shown in this catalog are exclusive to Hilltop Shop's USF Athletics Merch Shop and reflect a 20% discount on MSRP. Applicable tax not included. All HTS Marketplace sales are final.

# USF ATHLETICS MERCH

## T-SHIRTS

\$43.20



\$43.20



### USF Dons Vintage White Cotton Tee

Vintage White Soft Tee. Officially licensed by the University of San Francisco. Fabric is 100% Cotton. Printed in the USA. Available sizes M-2XL while supplies last.

\$43.20



\$43.20



### USF Bill Russell '55 Green Cotton Tee

Garment printed with Premium Brittle Base Ink - it cracks and ages with each wash for an authentically vintage look and feel. Sun faded dying technique - garment is hand treated so no two garments will ever be the same. Fabric is 100% Cotton. Printed in the USA. Available in sizes S-XL, while supplies last

Prices shown in this catalog are exclusive to Hilltop Shop's USF Athletics Merch Shop and reflect a 20% discount on MSRP. Applicable tax not included. All HTS Marketplace sales are final.

# USF ATHLETICS MERCH

\$46.40



\$46.40



## USF Bill Russell 6 Heather Grey Tri-Blend Tee



Garment printed with Premium Brittle Base Ink - it cracks and ages with each wash for an authentically vintage look and feel. Fabric is Tri-blend. Printed in the USA. Available in sizes M-2XL while supplies last

## SHORTS



\$52



\$52

## USF Bill Russell '55 Grey Shorts



Slim fit. Elasticized waistband with drawstring, back and side pockets. Wash in cold water, hang dry. Fabric is Tri-Blend Fleece. Garment printed with Premium Brittle Base Ink - it cracks and ages with each wash for an authentically vintage look and feel. Printed in the USA. Available in sizes XS-3XL while supplies last

Prices shown in this catalog are exclusive to Hilltop Shop's USF Athletics Merch Shop and reflect a 20% discount on MSRP. Applicable tax not included. All HTS Marketplace sales are final.

# USF ATHLETICS MERCH

## DETAILS

As an ode to our very own Campus Legend, Bill Russell, who dominated the courts as a Don, winning two consecutive championships for USF in the 1955 and 1956 NCAA Tournaments before going on to win 11 NBA titles in his 13 seasons with the Boston Celtics, we add details from his era. The vintage retro style of USF's logo and mascot brings back nostalgia in a way that is consistent with current fashion.



Prices shown in this catalog are exclusive to Hilltop Shop's USF Athletics Merch Shop and reflect a 20% discount on MSRP. Applicable tax not included. All HTS Marketplace sales are final.

# USF ATHLETICS MERCH

## HOT/COLD TUMBLERS

**\$28**



**\$28**



### USF Athletics 25 oz Copper Vacuum Hot/Cold Tumbler

Recommend Hand Wash Only • Keeps Drinks Cold for 48 hours • Keeps Drinks Hot for 12 hours • 18/8 Grade Stainless Steel Inner Wall • Double-wall Stainless Steel Vacuum Construction • Copper Insulation • Screw-On, Spill-Resistant Lid with Integrated Straw (For Cold Beverages Only) • Cupholder Compatible

Prices shown in this catalog are exclusive to Hilltop Shop's USF Athletics Merch Shop and reflect a 20% discount on MSRP. Applicable tax not included. All sales final.

# USF ATHLETICS MERCH

## ORDERING INSTRUCTIONS



### Hot/Cold Tumblers

#### Departmental Purchases

Departmental purchases can be made through HTS Marketplace by use of a FOAP like any other Catalog Store purchase. On the new homepage, click General Supplies/Promotional → USF Athletics Shop → Click the magnifying glass → filter by category → check “Athletic Wear” to see all USF Athletics Merch.

Departmental purchases receive a 20% discount off of MSRP (prices reflected on the USF Athletics Store have already been discounted)

#### Personal Purchases

Personal purchases can be made from USF Central Stores by sending an email to [eprocurement@usfca.edu](mailto:eprocurement@usfca.edu) with your order. Payment for personal purchases can only be made by check dropped off at the PaAS office at Hayes Healey Lower Level. Central Stores offers a 10% discount off of MSRP for USF faculty, staff, and students. (\$31.50 + tax each)

**Note: Tumblers are not available at the USF Bookstore**



### Apparel

#### Departmental Purchases

Departmental purchases can be made through HTS Marketplace by use of a FOAP like any other Catalog Store purchase. On the new homepage, click General Supplies/Promotional → USF Athletics Shop → Click the magnifying glass → filter by category → check “Athletic Wear” to see all USF Athletics Merch.

Departmental purchases receive a 20% discount off of MSRP (prices reflected on the USF Athletics Store have already been discounted)

#### Personal Purchases

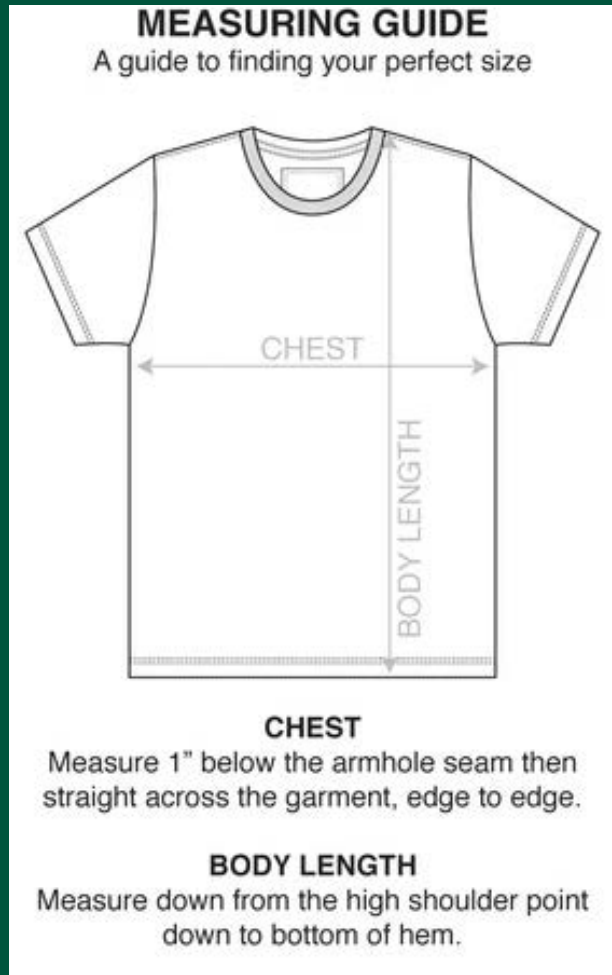
For personal purchases, please visit the **USF Bookstore**, where faculty and staff can receive a 10% discount if they show their USF ID.

**Note: Apparel not available through USF Central Stores**



# USF ATHLETICS MERCH

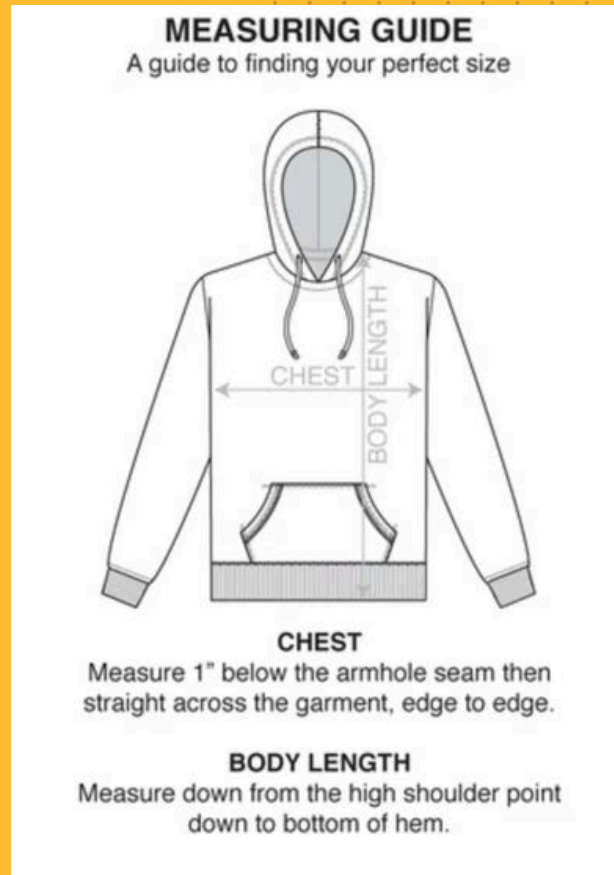
## T-SHIRT SIZE GUIDE



SIZE	CHEST	LENGTH
S	18-19"	26-27"
M	19-20"	27-28"
L	20.5-21.5"	28-29"
XL	21.5-22.5"	29-30"
2XL	23.5-24.5"	30-31"
3XL	24.5-25.5"	31-32"

# USF ATHLETICS MERCH

## HOODY SIZE GUIDE

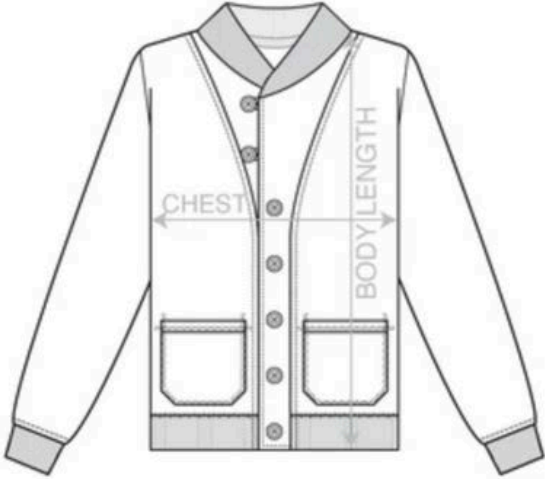


SIZE	CHEST	LENGTH
XS	19.5-20.5	26-27"
S	20.5-21.5"	27-28"
M	21.5-22.5"	28-29"
L	22.5-23.5"	29-30"
XL	23.5-24.5"	30-31"
2XL	24.5-25.5"	31-32"
3XL	25.5 - 26.5"	32-33"
4XL	26.5-27.5"	33-34"

# USF ATHLETICS MERCH

## CARDIGAN SIZE GUIDE

**MEASURING GUIDE**  
A guide to finding your perfect size



**CHEST**  
Measure 1" below the armhole seam then straight across the garment, edge to edge.

**BODY LENGTH**  
Measure down from the high shoulder point down to bottom of hem.

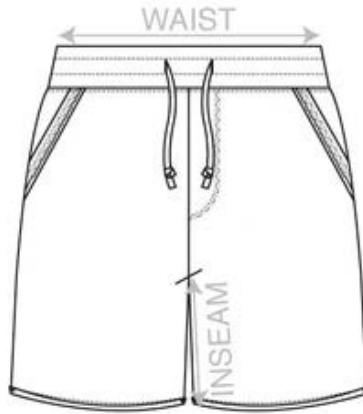
SIZE	CHEST	LENGTH
S	19-20"	25-26"
M	20-21"	27-28"
L	21-22"	28-29"
XL	22-23"	29-30"
2XL	23-24"	30-31"
3XL	24-25"	30-31"

# USF ATHLETICS MERCH

## SHORTS SIZE GUIDE

### MEASURING GUIDE

A guide to finding your perfect size



#### WAIST

Measure straight across the waist, edge to edge.

#### INSEAM

Measure from crotch seam down to bottom of hem.

SIZE	CHEST	LENGTH
XS	19.5-20.5	26-27"
S	20.5-21.5"	27-28"
M	21.5-22.5"	28-29"
L	22.5-23.5"	29-30"
XL	23.5-24.5"	30-31"
2XL	24.5-25.5"	31-32"
3XL	25.5 - 26.5"	32-33"
4XL	26.5-27.5"	33-34"

# USF ATHLETICS MERCH

Thank you for your support!



Go Dons!