

## Individual Report for

### Fall 2013 Online Course Evaluation Pilot

Project Audience 35

Responses Received 16

Response Ratio 45.71%

#### Subject Details

Name

Course\_No

Dep

Div College of Arts and Sciences

Subject

Course\_Level Undergraduate

First Name

Last Name

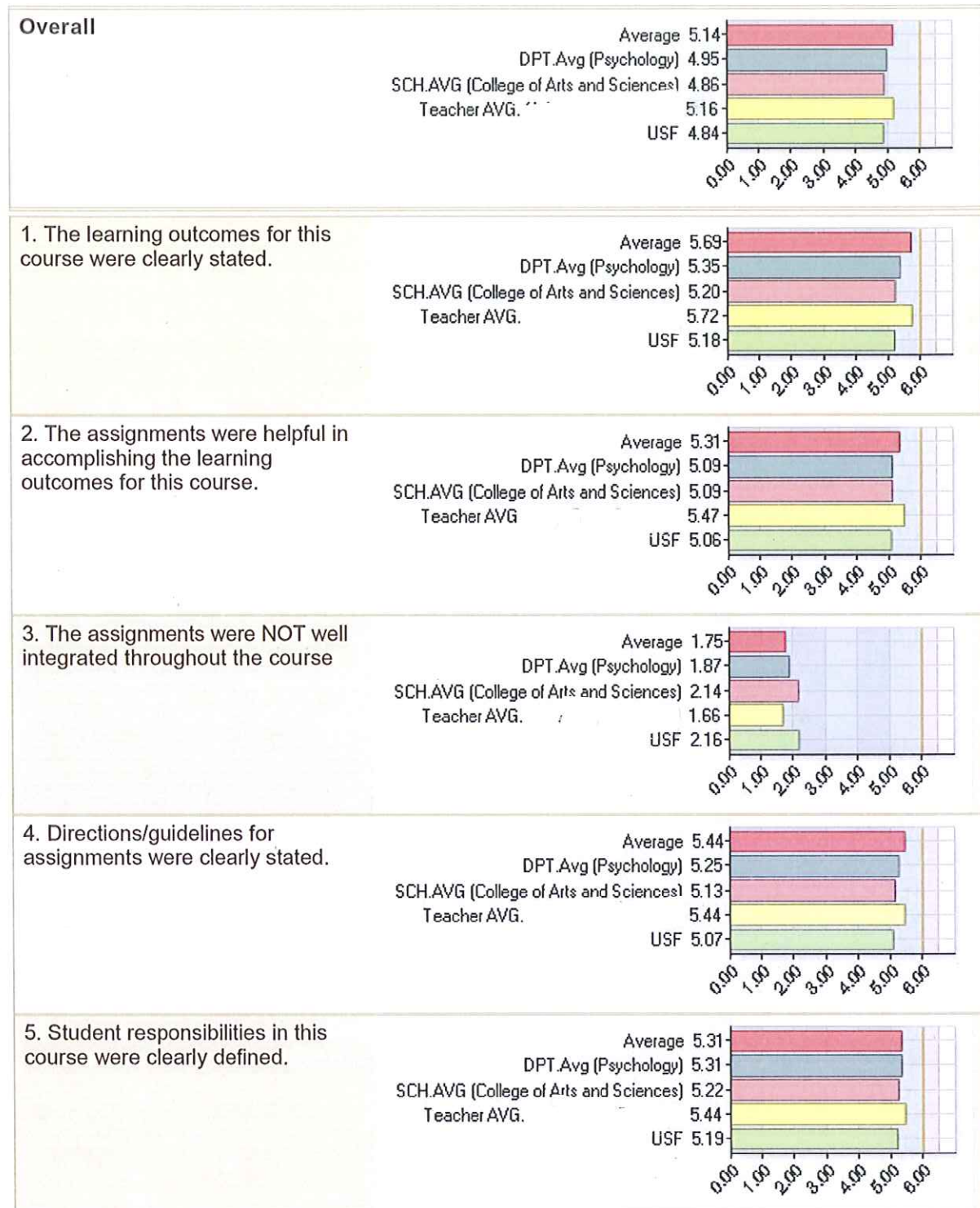
Unique\_Name

Faculty\_FT\_PT Full time

Prepared by Rola Al-Ghoul

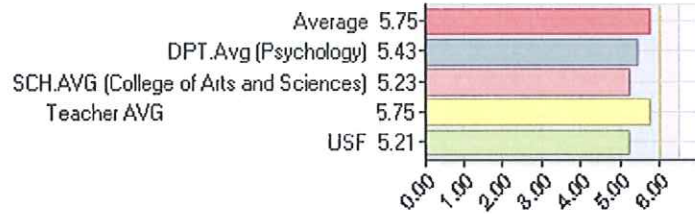
Creation Date Mon, Jan 13, 2014

## Instructional Design:

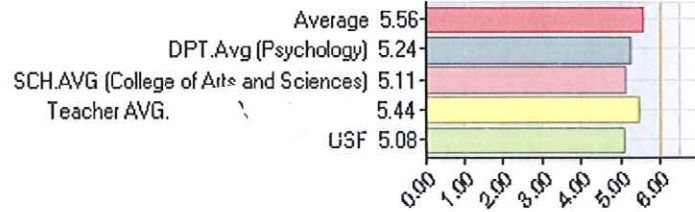


**Instructional Design: (continued)**

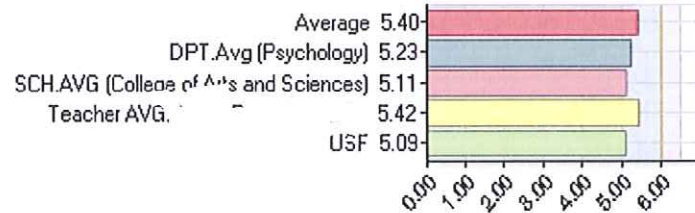
6. The course schedule was clearly laid out.



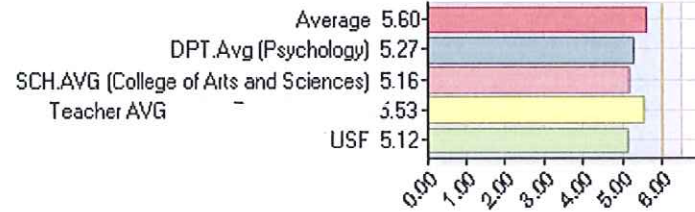
7. Criteria for assessing performance in this course were clearly stated.



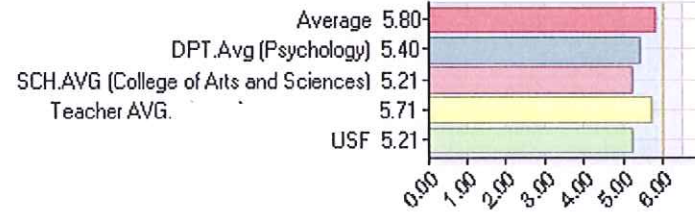
8. Criteria for assessing the completion of the learning outcomes were clearly stated.



9. Course materials were effective in accomplishing the student learning outcomes.



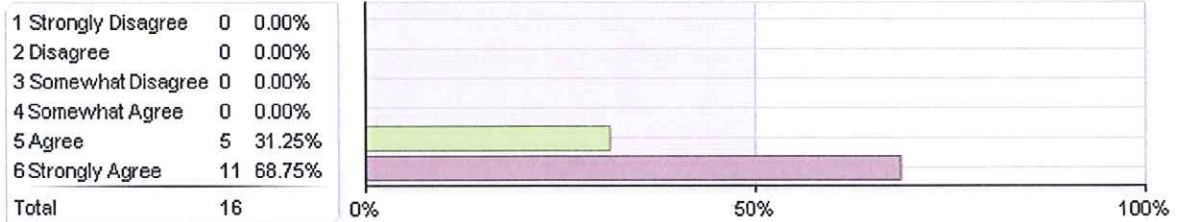
10. Topics that were covered have relevance beyond this course.



## Instructional Design:

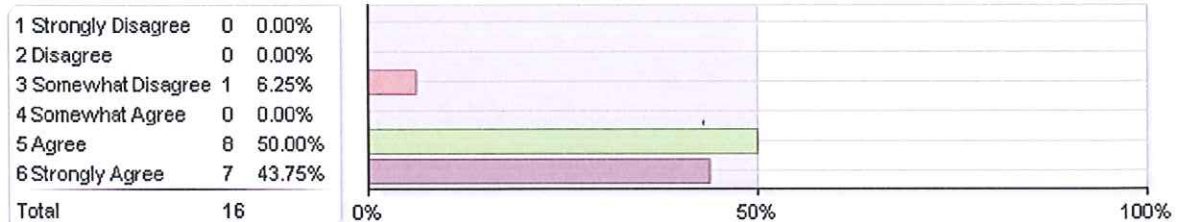
Construct Statistics	Value
Mean	5.16
Median	6.00
Standard Deviation	+/-1.36

1. The learning outcomes for this course were clearly stated.



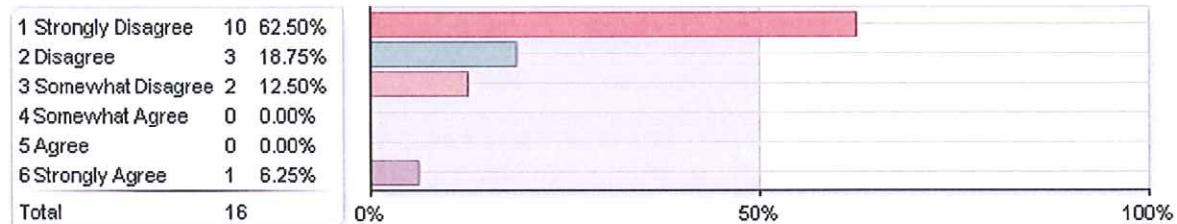
Statistics	Value
Mean	5.69
Median	6.00
Standard Deviation	+/-0.48

2. The assignments were helpful in accomplishing the learning outcomes for this course.



Statistics	Value
Mean	5.31
Median	5.00
Standard Deviation	+/-0.79

3. The assignments were NOT well integrated throughout the course

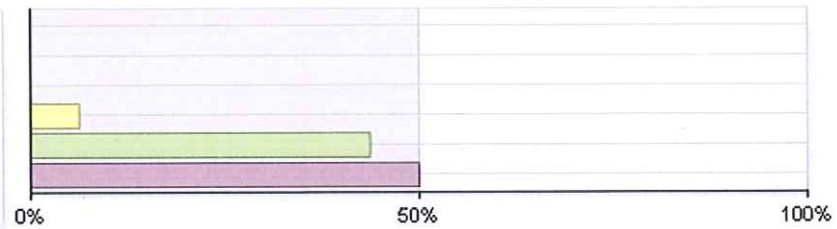


Statistics	Value
Mean	1.75
Median	1.00
Standard Deviation	+/-1.34

## Instructional Design: (continued)

4. Directions/guidelines for assignments were clearly stated.

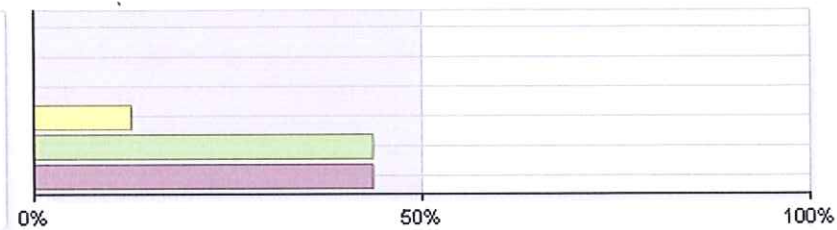
1 Strongly Disagree	0	0.00%
2 Disagree	0	0.00%
3 Somewhat Disagree	0	0.00%
4 Somewhat Agree	1	6.25%
5 Agree	7	43.75%
6 Strongly Agree	8	50.00%
<b>Total</b>	<b>16</b>	



Statistics	Value
Mean	5.44
Median	5.50
Standard Deviation	+/-0.63

5. Student responsibilities in this course were clearly defined.

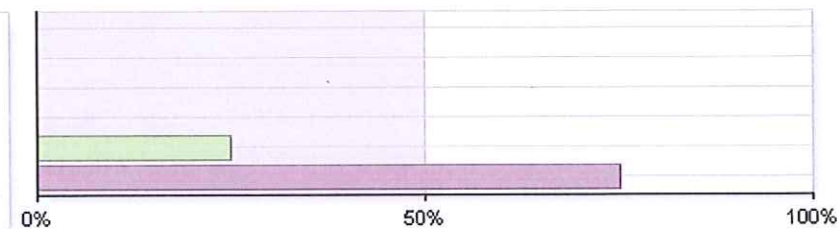
1 Strongly Disagree	0	0.00%
2 Disagree	0	0.00%
3 Somewhat Disagree	0	0.00%
4 Somewhat Agree	2	12.50%
5 Agree	7	43.75%
6 Strongly Agree	7	43.75%
<b>Total</b>	<b>16</b>	



Statistics	Value
Mean	5.31
Median	5.00
Standard Deviation	+/-0.70

6. The course schedule was clearly laid out.

1 Strongly Disagree	0	0.00%
2 Disagree	0	0.00%
3 Somewhat Disagree	0	0.00%
4 Somewhat Agree	0	0.00%
5 Agree	4	25.00%
6 Strongly Agree	12	75.00%
<b>Total</b>	<b>16</b>	

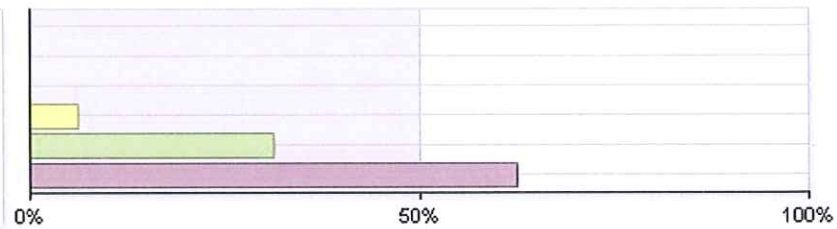


Statistics	Value
Mean	5.75
Median	6.00
Standard Deviation	+/-0.45

## Instructional Design: (continued)

7. Criteria for assessing performance in this course were clearly stated.

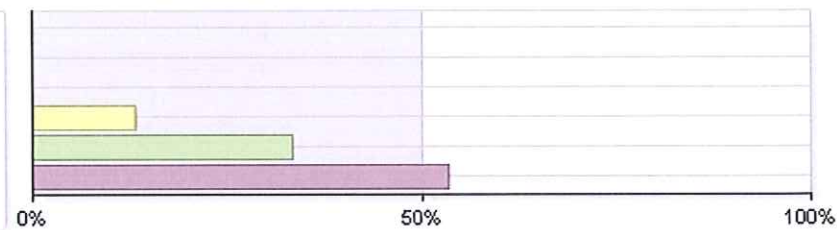
1 Strongly Disagree	0	0.00%
2 Disagree	0	0.00%
3 Somewhat Disagree	0	0.00%
4 Somewhat Agree	1	6.25%
5 Agree	5	31.25%
6 Strongly Agree	10	62.50%
<b>Total</b>	<b>16</b>	



Statistics	Value
Mean	5.56
Median	6.00
Standard Deviation	+/-0.63

8. Criteria for assessing the completion of the learning outcomes were clearly stated.

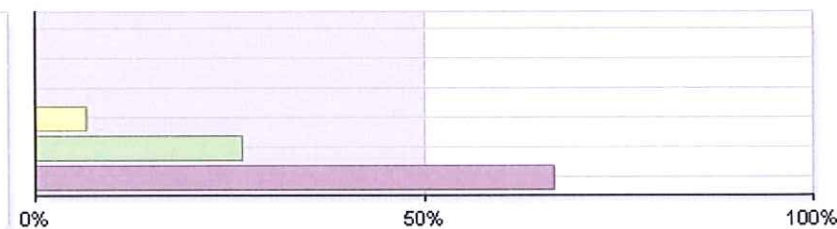
1 Strongly Disagree	0	0.00%
2 Disagree	0	0.00%
3 Somewhat Disagree	0	0.00%
4 Somewhat Agree	2	13.33%
5 Agree	5	33.33%
6 Strongly Agree	8	53.33%
<b>Total</b>	<b>15</b>	



Statistics	Value
Mean	5.40
Median	6.00
Standard Deviation	+/-0.74

9. Course materials were effective in accomplishing the student learning outcomes.

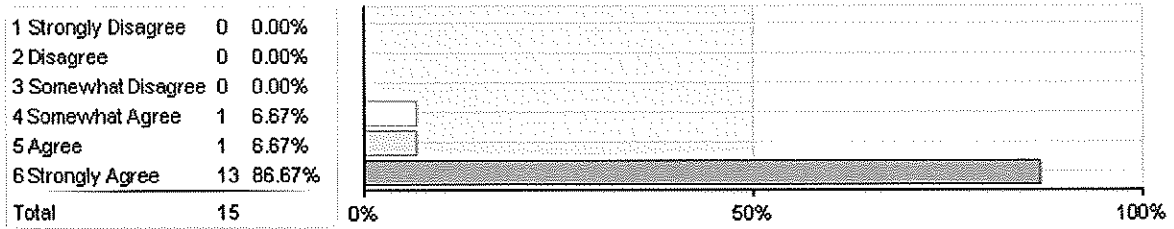
1 Strongly Disagree	0	0.00%
2 Disagree	0	0.00%
3 Somewhat Disagree	0	0.00%
4 Somewhat Agree	1	6.67%
5 Agree	4	26.67%
6 Strongly Agree	10	66.67%
<b>Total</b>	<b>15</b>	



Statistics	Value
Mean	5.60
Median	6.00
Standard Deviation	+/-0.63

## Instructional Design: (continued)

10. Topics that were covered have relevance beyond this course.



Statistics	Value
Mean	5.80
Median	6.00
Standard Deviation	+/-0.56