

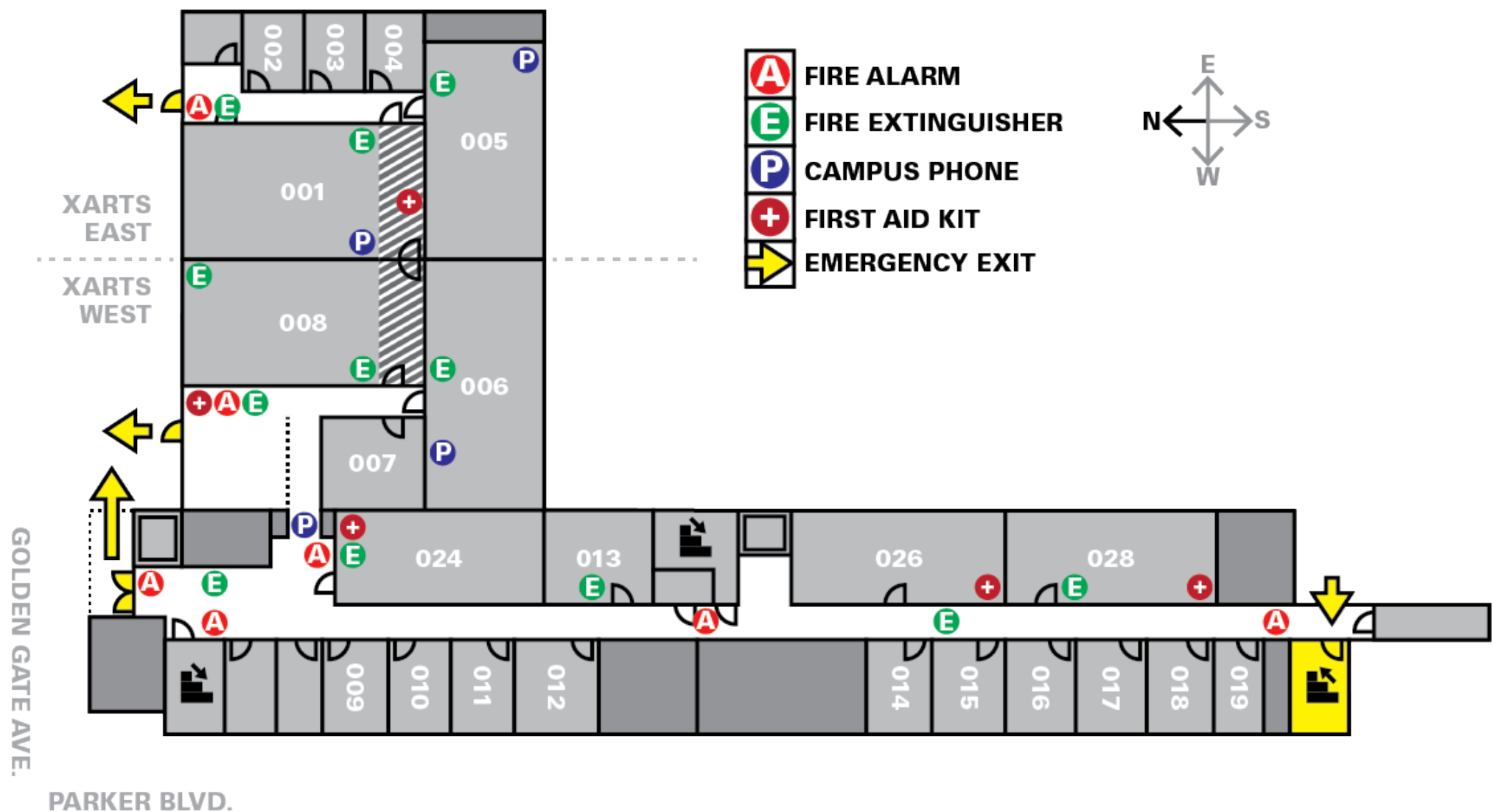
EMERGENCY ASSISTANCE

LIFE OR LIMB-THREATENING

EMERGENCY IS ON CAMPUS		EMERGENCY IS OFF CAMPUS	
USF PUBLIC SAFETY		911 EMERGENCY	
CAMPUS PHONE	OTHER PHONE	CAMPUS PHONE	OTHER PHONE
2911	415-422-2911	9,911	911

CRITICAL EVENT QUICK REFERENCE

FIRE	EARTH-QUAKE	ACTIVE SHOOTER	POWER OUTAGE
<ul style="list-style-type: none"> ALERT OTHERS IN AREA ACTIVATE FIRE ALARM USE FIRE EXTINGUISHER (IF COMFORTABLE) <ol style="list-style-type: none"> PULL PIN AIM LOW AT BASE OF FIRE SQUEEZE LEVER SWEEP FROM SIDE TO SIDE EVACUATE TO SAFE LOCATION CALL USF PUBLIC SAFETY: <ul style="list-style-type: none"> CAMPUS PHONE: 2911 OTHER PHONE: 415-422-2911 	<ul style="list-style-type: none"> DROP + COVER + HOLD ON IF NO COVER, DROP TO INTERIOR WALL, PROTECT HEAD + NECK AVOID EXTERIOR WALLS AFTER SHAKING: <ul style="list-style-type: none"> EVALUATE SURROUNDINGS DO NOT EVACUATE UNLESS: <ol style="list-style-type: none"> DIRECTED TO DO SO BUILDING STRUCTURE IS VISIBLY COMPROMISED SURROUNDINGS ARE HAZARDOUS 	<ul style="list-style-type: none"> RUN HIDE FIGHT 	<ul style="list-style-type: none"> MON-FRI AFTER 5PM AND ON WEEKENDS: EVACUATE XARTS MON-FRI, 9 AM – 5 PM: EVACUATE IF UNSAFE IF FACULTY OR STAFF REMAIN IN XARTS, OKAY TO PROP OPEN ONE CARD CONTROLLED DOORS (WHICH AUTOMATICALLY LOCK DURING A POWER OUTAGE)



ASSEMBLY LOCATION: KORET SOCCER FIELD

NON-EMERGENCY ASSISTANCE

NOT LIFE OR LIMB-THREATENING

INCIDENT IS ON CAMPUS

USF PUBLIC SAFETY

CAMPUS PHONE

4201

OTHER PHONE

415-422-4201

INCIDENT IS OFF CAMPUS

SF POLICE DEPARTMENT

CAMPUS PHONE

**9,1,
415-553-0123**

OTHER PHONE

415-553-0123

URGENT BUILDING OR FACILITY ISSUE

EXAMPLES: LEAK, CLOG, COMPROMISED DOOR, POWER OUTAGE, ELECTRICAL ISSUE, ANT INFESTATION, AIR CONDITIONING FAILURE

MON-FRI, 9 AM – 5 PM

USF FACILITIES

CAMPUS PHONE

6464

OTHER PHONE

415-422-6464

MON-FRI AFTER 5 PM + WEEKENDS

USF PUBLIC SAFETY

CAMPUS PHONE

4201

OTHER PHONE

415-422-4201

(SOME) A+A SUPPORT CONTACTS

OFFICE / INDIVIDUAL		WEB	PHONE	E-MAIL
	<i>myUSF account, network connection, printer driver install</i>	myusf.usfca.edu/its	415-422-6668	itshelp @usfca.edu
Pharos Copier / Multifunction Printer (MFP)	<i>card reader malfunction, card access, Don Dollars account</i>	myusf.usfca.edu/student-life/one-card	415-422-7663	onecard @usfca.edu
	<i>all other matters concerning the copy/print program</i>	myusf.usfca.edu/purchasing/facstaff/printing	415-422-6118	copycenter @usfca.edu
USF Information Technology Services (ITS)	<i>Canvas, USF Wireless network, myUSF account, USF email + apps (Gmail), faculty/staff computers, etc.</i>	myusf.usfca.edu/its	415-422-6668	itshelp @usfca.edu
USF Educational Technology Services (ETS)	<i>(part of Information Technology Services)</i>	myusf.usfca.edu/its/ets	---	ets @usfca.edu
USF Facilities		myusf.usfca.edu/facilities	415-422-6464	---
USF Public Safety and Transportation		search myUSF for "public safety"	415-422-4201	dispatcher @usfca.edu
USF Safety Escort Service	<i>(part of Public Safety)</i>	search myUSF for "usf shuttle services"	415-422-4201	dispatcher @usfca.edu
USF One Card and Campus Security Systems	<i>(part of Public Safety)</i>	myusf.usfca.edu/student-life/one-card	415-422-7663	onecard @usfca.edu
USF Counseling and Psychology Services (CAPS)		myusf.usfca.edu/student-health-safety/caps	415-422-6352	---
USF Title IX Coordinator	<i>to report incidents of sexual misconduct</i>	myusf.usfca.edu/title-ix	415-422-5330	llefleming @usfca.edu
USF Environmental Safety Manager	Joe Murphy (Facilities)	---	415-422-6883	murphyj @usfca.edu
Lab Safety Manager	Craig Conforti (Arts & Sciences)	myusf.usfca.edu/arts-sciences/lab-safety	415-422-6687	caconforti @usfca.edu
USF Director of Campus Resilience	Eric Giardini (Public Safety)	---	415-422-4047	egiardini @usfca.edu
A+A Director of Technology	Steve Rhyne – XARTS classroom technology	xarts.usfca.edu	415-422-6604	srrhyne @usfca.edu
A+A Studio Manager	Sean Olson – XARTS classroom materials and tools	usf.usfca.edu/xartstudios	415-422-5517	solson3 @usfca.edu
A+A Program Assistant: Architecture, Fine Art, Urban Studies	Joey Jordan – admin. support for faculty + students	---	415-422-5685	jmjordan2 @usfca.edu
A+A Program Assistant: Design, Art History, Museum Studies	Sarah Schweitzer – admin. support for faculty + students	---	415-422-5681	sschweitzer2 @usfca.edu