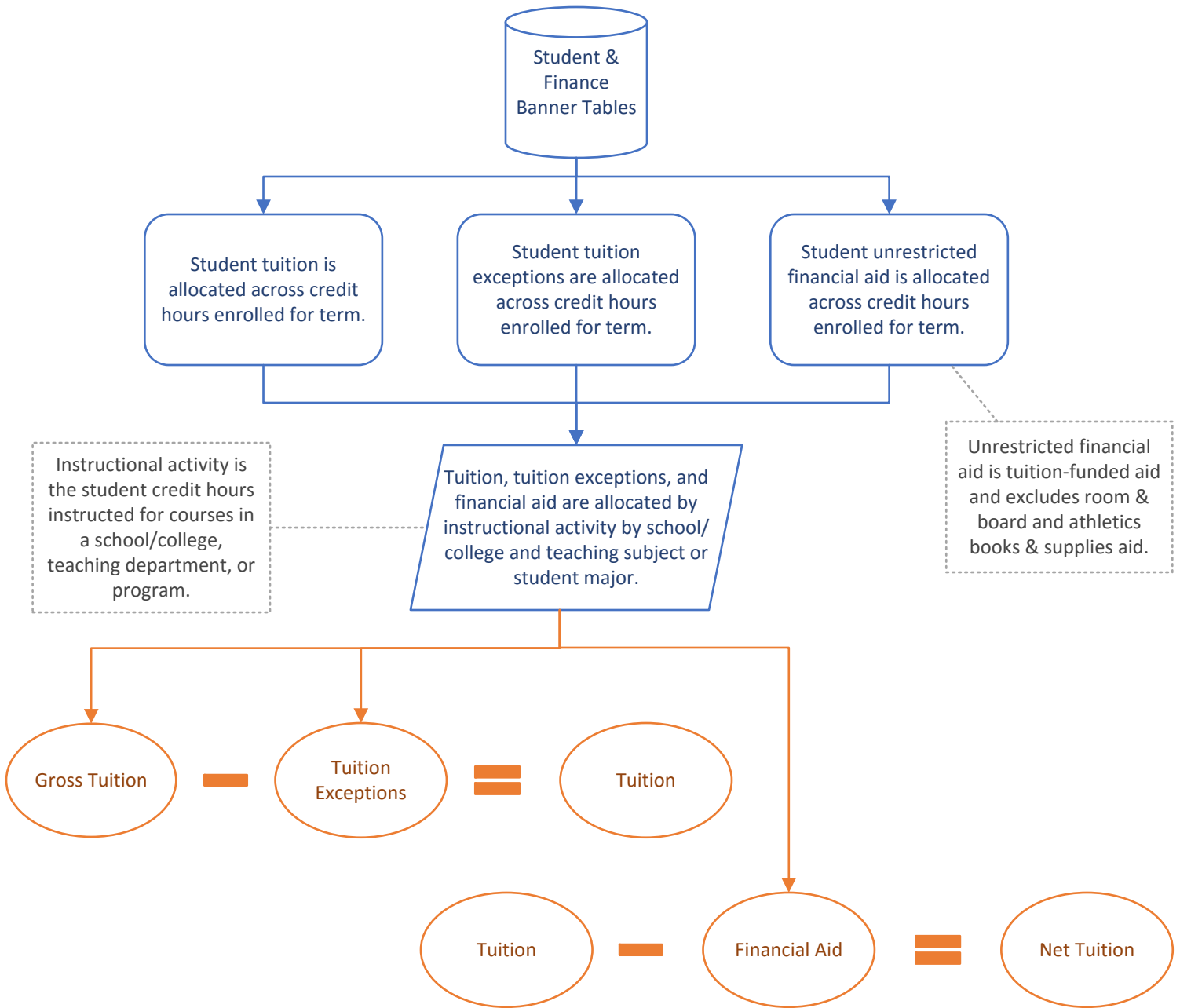
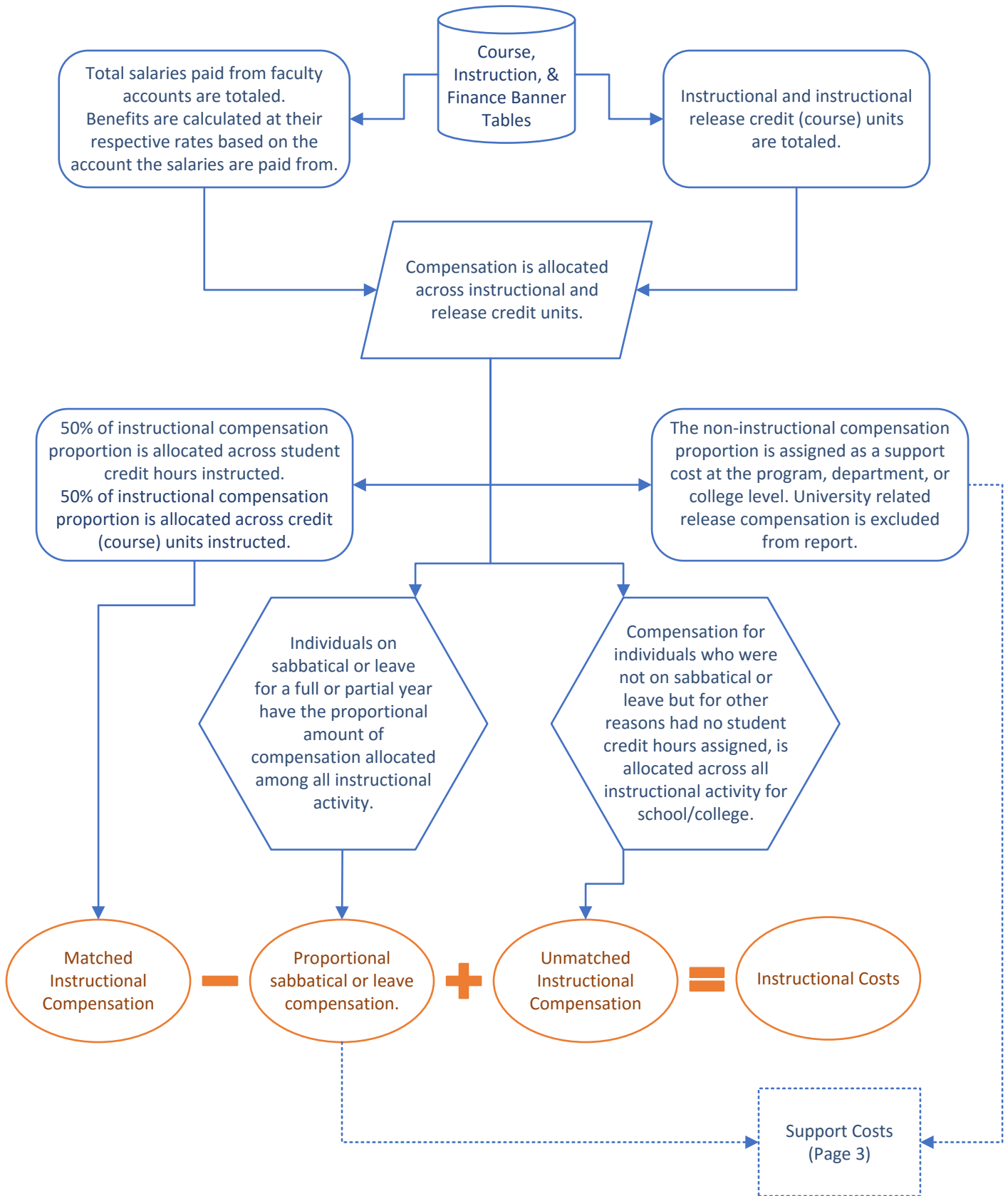


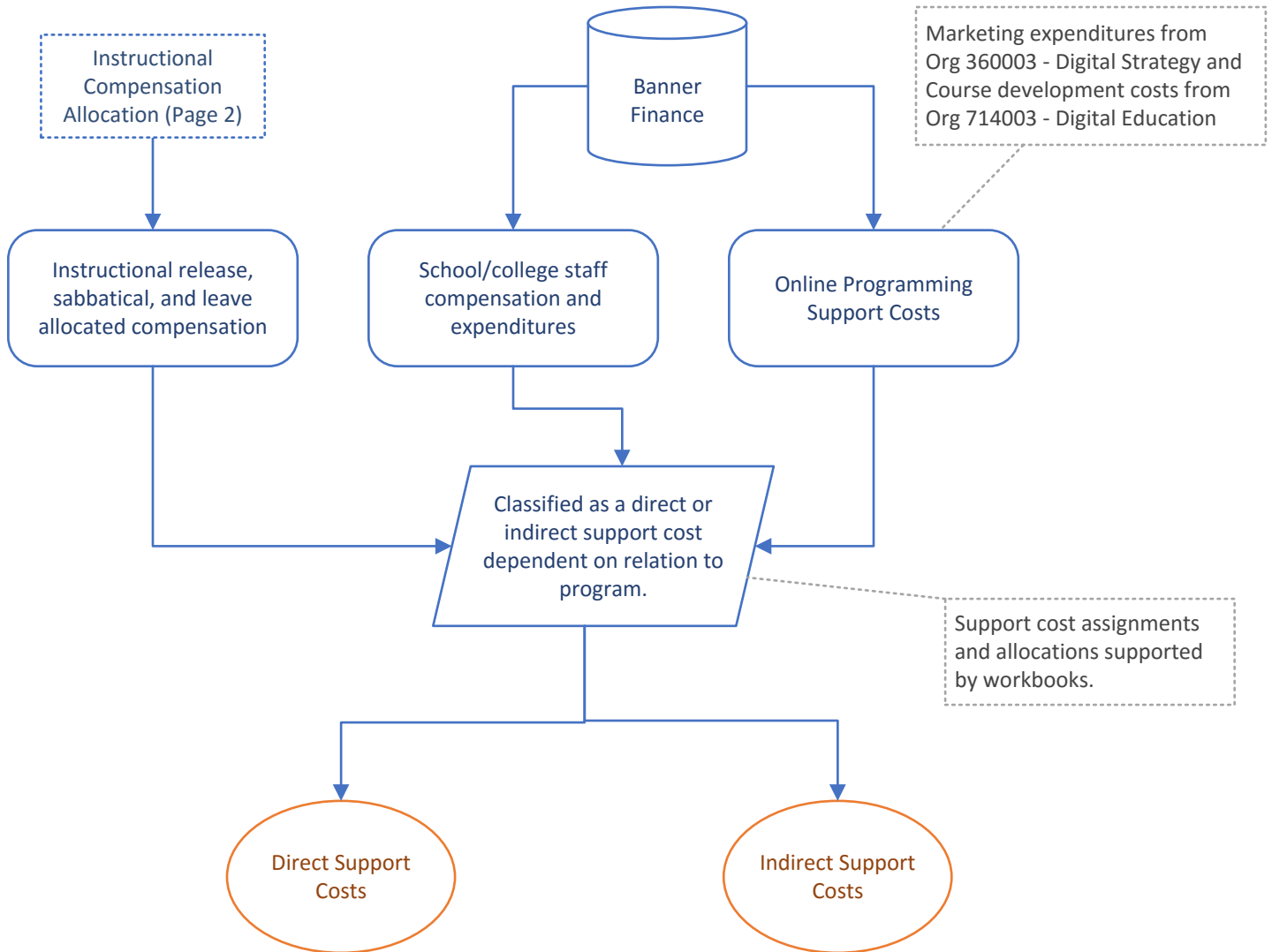
Tuition, Tuition Exceptions, & Financial Aid Allocation



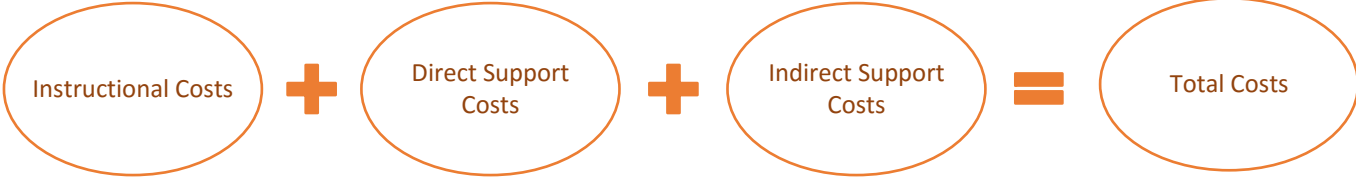
Instructional Compensation Allocation



Support Costs Allocation



Financial Profile Summary



$$\frac{(\text{Net tuition} + \text{Fees and other revenue}) - \text{Instructional Costs}}{\text{Tuition} + \text{Fees and other revenue}}$$



$$\frac{(\text{Net tuition} + \text{Fees and other revenue}) - (\text{Instructional} + \text{Direct Support Costs})}{\text{Tuition} + \text{Fees and other revenue}}$$



$$\frac{\text{Contribution (Net Margin)}}{\text{Tuition} + \text{Fees and other revenue}}$$